

# ORDER #2018-04

## ORDER TO CLOSE PANOLA COUNTY ROAD #4082

**BE IT REMEMBERED**, that the Commissioners' Court of Panola County, Texas met in Regular Session on the 12<sup>th</sup> of June, 2018, after due notice of meeting had been posted in the form, manner, and place required by law, with a quorum of its members present and participating in the meeting when, among other matters, the following came on to be considered, and action taken thereon, to-wit. The following were present:

LeeAnn Jones, County Judge, Panola County, Texas  
Ronnie LaGrone, Commissioner of Precinct No. 1, Panola County, Texas  
John Gradberg, Commissioner of Precinct No. 2, Panola County, Texas  
Craig M. Lawless Commissioner of Precinct No. 3, Panola County, Texas  
Dale LaGrone, Commissioner of Precinct No. 4, Panola County, Texas.

Pursuant to published Agenda of said meeting, Commissioner *Dale LaGrone* offered the following order and moved its adoption, which was seconded by Commissioner *Craig Lawless*, to-wit:

**WHEREAS**, the Panola County Commissioners' Court, while meeting in Regular Session on the 15<sup>th</sup> day of May, 2018, voted to approve posting a petition to close Panola County Road #4082; and

**WHEREAS**, the petition was posted as prescribed by law and has been posted for at least 20 days prior to this Order being adopted; and

**WHEREAS**, the Panola County Commissioners' Court has determined that the interest of the public and affected landowners have been protected as it relates to the closing of Panola County Road #4082; and

**WHEREAS**, after due discussion and no opposition to closing of said county road the Court does authorize the closing of said county road effective immediately; and

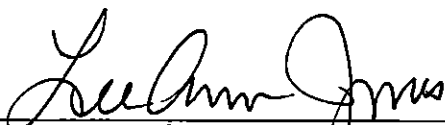
**WHEREAS**, pursuant to Section 251.058 of the Texas Transportation Code the County of Panola as Grantor shall convey to the center of said county road See

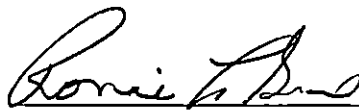
attachment "A" to Richard & Denise Murphy (property owners) as grantees and by order of this court this order be entered into the deed records of the County Clerk's office of the County of Panola and shall serve as the official instrument of conveyance from the county as grantor to the property owner receiving conveyance as grantee of the abutting property.

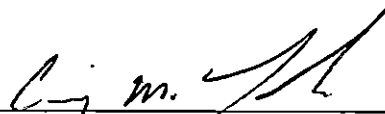
**NOW, THEREFORE, BE IT ORDERED**, by the Commissioners' Court of Panola County, Texas, that Panola County Road #4082 be closed and Panola County from this date will no longer maintain that portion of said road.

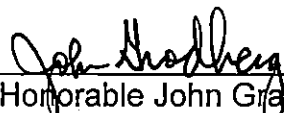
Upon vote, all voted 5 "Aye" and 0 voted "No", and the County Judge declared the Order duly adopted. The above and foregoing is true and correct.

**ADOPTED** in Open Court this 12<sup>th</sup> day of June, 2018.

  
\_\_\_\_\_  
County Judge LeeAnn Jones

  
\_\_\_\_\_  
Honorable Ronnie LaGrone  
Commissioner, Precinct One

  
\_\_\_\_\_  
Honorable Craig M. Lawless  
Commissioner, Precinct Three

  
\_\_\_\_\_  
Honorable John Grudberg  
Commissioner, Precinct Two

  
\_\_\_\_\_  
Honorable Dale LaGrone  
Commissioner, Precinct Four

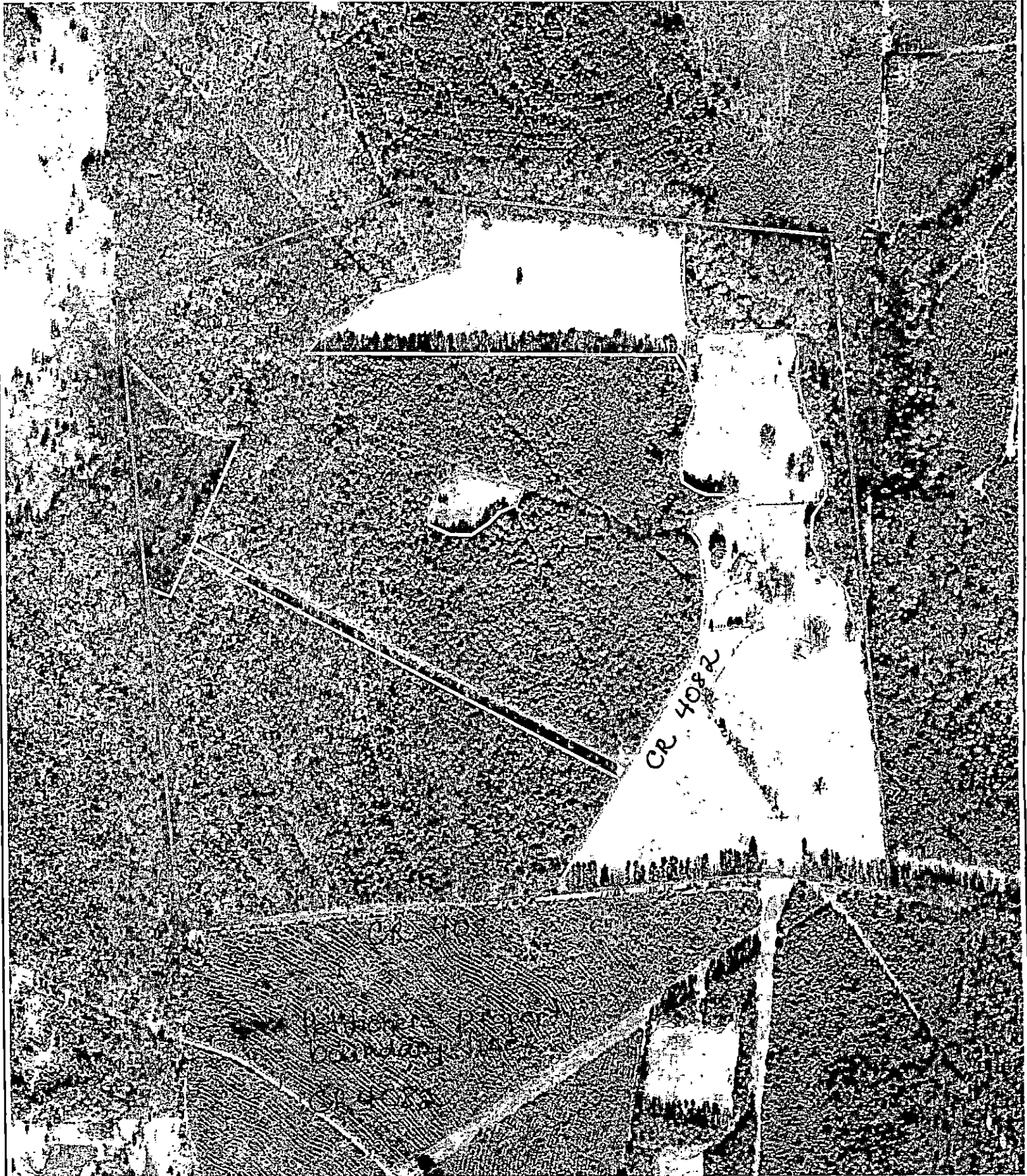
**ATTEST:**

  
\_\_\_\_\_  
County Clerk Bobbie Davis



**Golden - Carthage Tract**  
Aerial Stand Map

Approx. 230 Acres  
Panola County, TX



N  
0 330 660 Feet  
2015 TOP Imagery

Exhibit "A"

Tract Boundary

